

# Filozofski fakultet, zbirni izvještaj, 2. semestar 2022-2023-engleski

No. of responses = 51



## Overall indicators

### Global Index



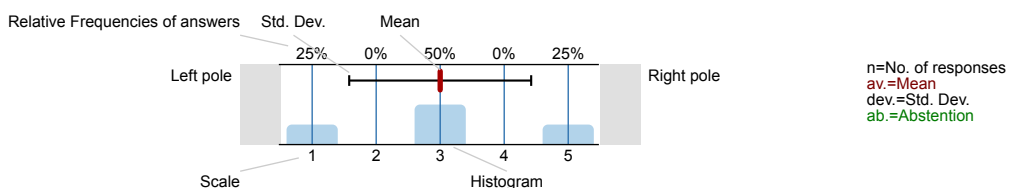
### 2. Questions on lectures and teaching quality



## Survey Results

### Legend

Question text

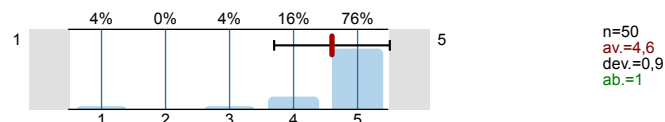


## 1. Questions about student

1.1) Sex:

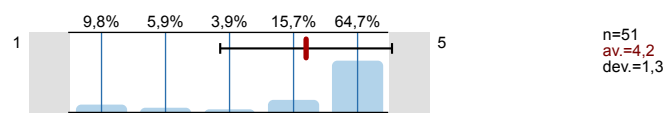


1.2) Make a self-assessment of capability of meeting the course requirements

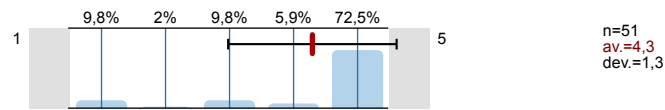


## 2. Questions on lectures and teaching quality

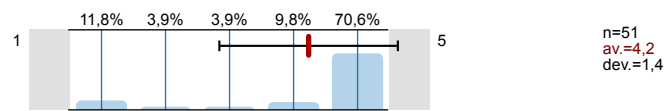
2.1) Teacher/associate has introduced the course contents and syllabus in a clear and understandable way.



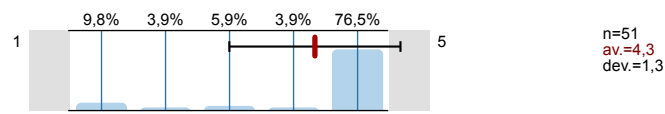
2.2) Teacher/associate has set clear methods and criteria for student assessment.



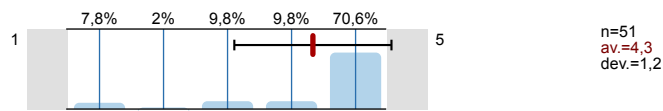
2.3) Lectures take place on time and regularly.



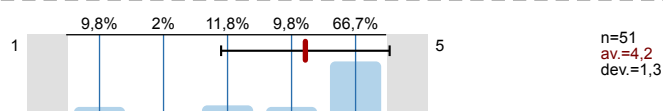
2.4) Teacher/associate presents the course contents in an understandable way.



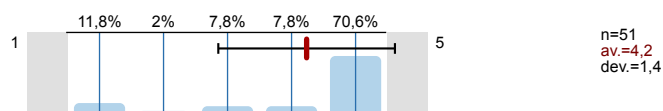
2.5) Teaching is performed in accordance with the syllabus.



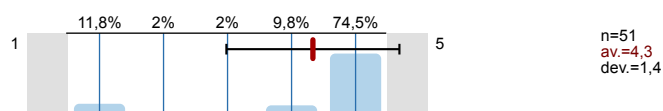
2.6) Teaching materials are user friendly and understandable.



2.7) Teacher/associate puts effort into quality teaching.



2.8) Teacher/associate encourages student activity during lessons.



2.9) Teacher/associate has established fair communication with students.

